

*Illuminated signage provides high impact advertisement, with practically no limitation or restriction on size.*

*They ensure your entrance has prominence and a clear identity.*

*Illuminated  
Box Signage*



## Key Advantages

- Large & Ultra Large formats achievable
- Seamless, professional effect
- Versatile, bespoke customer shapes possible
- Digitally printed to any colour or graphic
- Suitable in areas affected by serious weather conditions
- Simple and quick installation
- Extremely cost effective
- Can be incorporated into existing signage systems
- Economically suitable for short term projects

## Fixing Method

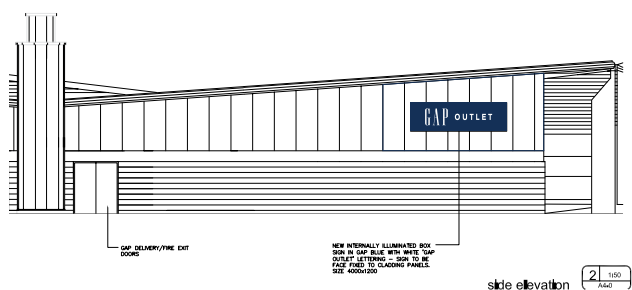
- Flex Faces are stretched to conform to aluminium back boxes or metal frames.
- Can be mounted onto stainless steel posts or flush with building surface.

## Suitable Applications

- Retail Parks
- Large Scale Distribution Warehouse Facilities
- Advertising, short & long-term projects
- HGV vehicle branding or advertising

# Flex Face

**Item 1:**  
**x1 Internally illuminated Sign Box**  
 Scale 1:25 at A4



## Key Advantages

- Versatile enough to comply with any corporate guidelines.
- Extremely durable
- Can be manufactured in low volume
- Cost effective
- Can create illusion of more desirable built up letter signage
- Has reduced implications for planning consent

## Fixing Method

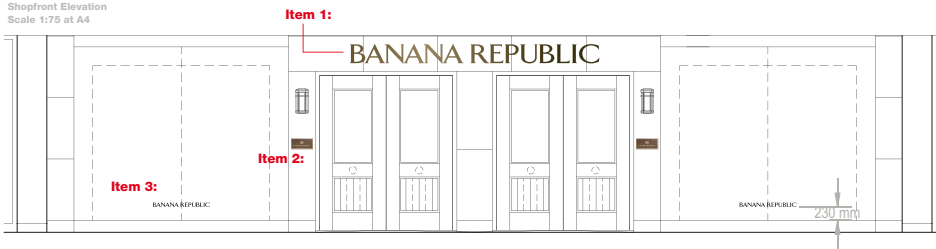
- Flat to facias, with mechanical fixings
- Bolted to steal frames
- Bonded to glass
- Mounted on posts
- Suspended via cable systems
- Projecting from wall on brackets

## Suitable Applications

- High Street Retail
- Corporate Offices
- Estate Agencies
- Hotels

# Aluminum Fret Cut

Shopfront Elevation  
Scale 1:75 at A4



**Item 1:**  
x1 Internally illuminated halo lit built up letters  
Scale 1:30 at A4



**Sign A: (for the cash desk)**  
x1 set of built-up letters  
Scale 1:10 at A4



## Key Advantages

- Sophisticated style of signage
- Can be used where restricted planning applies
- Can be manufactured in small to ultra large scale formats
- Options on style such as flat and built up
- Options on materials such as aluminium, stainless steel satin, mirror polished, de-scaled, mild steel, acrylic, foamex, brass or copper
- Combinations of materials can be used to create specific design effect
- Options lighting such LED, Neon, fluorescent and Fibre Optics to create either face illumination backlit halo effect
- Options on colour such as paint, powder coating or full colour vinyl graphics

## Fixing Method

- Flush, with two part nickel locators
- Raised effect, situated on stand off locators
- Mounted on a metal frame
- Bonded to glass
- Fitted to specialist back panels, to create double sided sign

## Suitable Applications

- Banks & Building Societies
- Corporate Offices
- Solicitors, Accountants
- High end retailers

# Individual Letters

*Architectural signage is not off the shelf it does not exist in any catalogue and is always manufactured to order.*

*It comes into its own for projects which are unusually challenging and fun... there are no limitations on creativity.*

# *Architectural Signage*



## Key Advantages

- Seen as new trend
- Can incorporate existing or new signage system
- Can be manufactured for small and large scale fully glazed facades
- Creates focus and inviting aspect
- Extremely durable, manufactured from structured steel support frames, typically clad in aluminium
- Options on finish such as paint, texture coated and full colour vinyl graphic wraps
- Can incorporate options on lighting, glazing rails, electronically operated shutter guides and security systems

## Fixing Method

- Bolted into concrete slabs
- Connected via brackets to existing structural steelwork
- Silicon jointed into existing glazing

## Suitable Applications

- High end retailers
- Corporate head offices
- Museums
- Airports

# Portals



## Key Advantages

- Creates additional focus point to main entrance
- Provides protection for the elements
- Existing or new signage can be incorporated within the structure
- Lighting can be incorporated within the structure
- Options on finish such as paint, texture coated and full colour vinyl graphic wraps
- Extremely durable, manufactured from structured steel support frames, typically clad in aluminium

## Fixing Method

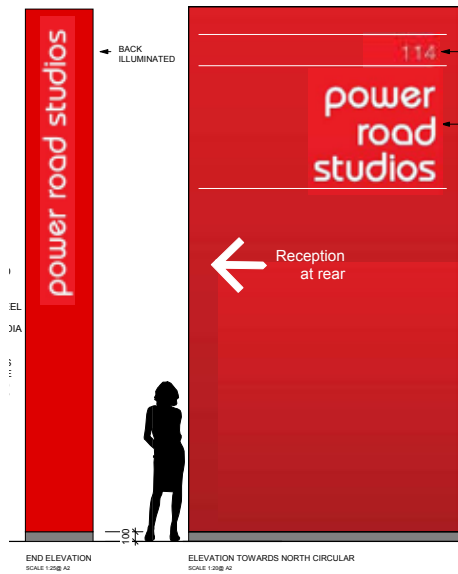
- Bolted or welded to existing structural steelwork
- Optional addition of supporting steel columns, which have been either cast or bolted into concrete.
- Alternative option of tension cable system or specialised canterlever brackets.

## Suitable Applications

- Corporate head offices
- Museums
- High end retailers
- Cruise liners
- Airports

# Canopies

TOTEM SIGN MANUFACTURED FROM 3MM ALUMINIUM PAINTED RED WITH WHITE REFLECTIVE VINYL APPLIED TO THE FACE. PLINTH FROM FOLDED SATIN STAINLESS STEEL FIXED OVER RED PANELS. SUBFRAME MANUFACTURED FROM MILD STEEL WITH HOT DIPPED GALVANISED FINISH. LETTERING READING 'POWER ROAD STUDIOS AND 114 NUMERALS TO BE INTERNALLY ILLUMINATED LINES, ARROW AND RECEPTION TO BE IN WHITE REFLECTIVE VINYL



INTERNALLY ILLUMINATED FRE PAINTED STEEL PANELS TO MATCH INTERNALLY ILLUMINATED WITH ARROW FRET CUT FROM SIGN PLINTH RECESSED TO MATCH LIGHTS ON PHOTOCELL WITH

GRAPHIC IMAGE SHOWN HERE IS RE SIGN MAKER IS TO USE ARTWORK S FOR LOCATION REFER TO DRAWING

A -12.01.08 AMENDED ENTRANCE SIGN SIZE CHANGED SCALE OF DRAWING TO 1:25	CLIENT LONDON & STRATE
B -02.02.09 AMENDED NOTES FOR CONSTRUCTION AND GRAPHIC NOTE	JOB POWER ROAD STU
C -17.03.09 AMENDED NOTES FOR CONSTRUCTION AND GRAPHIC NOTE	114 POWER RD CF LONDON W4
D -25.05.09 ADDED SITE PLAN AND REFERENCE NO.	DESCRIPTION SITE SIGNAGE TC AND S-S
E -08.06.09 ARROW DIRECTION AMENDED	DATE 1 SEPT 0
F -20.04.10 SIZE OF SIGN AND GRAPHIC AMENDED	DRAWING NUMBER SD 10 11
G -26.04.10 SIGN REFS ADDED	



## Key Advantages

- Highly visual, especially from long distances
- Informative, improves traffic flow
- Custom design possible
- Can incorporate other services, such as intercom, CCTV & security
- Can be manufactured from various raw material options
- Options on lighting effect, such as internally or ground lit
- Options on colour & finish effect
- Fully weatherproof & durable
- Can be installed in any groundwork condition

## Fixing Method

- Re-enforced concrete foundations, taking into consideration
- Height, wind loading & ground conditions
- Bolted onto existing concrete infrastructure
- Set into excavated foundations

## Suitable Applications

- Main entrance of Retail & Business Parks
- Supermarkets
- Petrol Stations
- Drive-thru Restaurants
- Car Parks
- Hotels
- Car Dealerships
- Airports
- Directional business signage

# Totems & Post Signs



# Bespoke Projects

*Bespoke projects truly are unique.*

*From creative sculptures to monuments and street furniture the team at Bolton Sign use their experience in different areas to take your creative requirements and deliver captivating results .*

*Your creative vision. Realised.*

# Cultivating Ideas

Working closely with Studio Tech, a project management & design based organisation located in Stockport, Bolton Sign began work on an exciting project that would prove to be both challenging and fun.

Commissioned by Lincolnshire County Council, Studio Tech where to design a new sculpture which would be installed in a new retail complex based in Spalding, Lincolnshire.

The design brief centered around a horticultural theme. The purpose of the sculpture was to act as a focal meeting point within the retail complex. The brief indicated that the sculpture had to be eye-catching, memorable, colourful and durable.

Studio Tech presented their initial conceptual designs when, it was decided that the Tulip was the local authorities preferred choice.



## In Bloom

The main stem (supporting post) was constructed from laser cut mild steel profiles. It was then fabricated and welded to the desired shape. Individual letters where fabricated and bonded to the stem.

The raw material was galvanised in a bath of hot zinc to ensure maximum durability and then colour coated for the desired aesthetic.

The flower was custom fabricated from 10swg aluminium sheets. The returns where constructed from aluminium extrusion, which were shaped and welded to create the 3D sectional pieces.

The individually cut face panels where high performance bonded to the aluminium sections to minimize welding distortion.

Each section was internally reinforced by the introduction of steel support brackets.

Once the individual sections had been produced they where prepared and filled ready for colour spray coating.

The metal work was then assembled to form the finished sculpture.

### Planting the structure

The sculpture was fixed within a custom made steel reinforced mahogany housing which included seating facilities.

This structure was also manufactured by Bolton Sign.